



Photo © Daniel Perales

**Play value**

The smooth-running spinner can be put into motion with a push, either with a hand whilst sitting or in a standing position using a foot. The handrail tubing can be used to hold on to. It promotes small gymnastic-type exercises. Because of its shape, the Small Spinner is also suitable as a play spot in a pedestrian zone or other inner-city locations.

**Fundamental characteristics**

- Child-size and age-appropriate dimensions
- A spinning play offer for all ages
- High-quality design
- Playful experience of the pirouette effect
- Incentive for playing: human shape, recognition value
- Movement: spinning, shifting one's weight



Photo © Daniel Perales



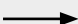

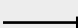
**Small Spinner**

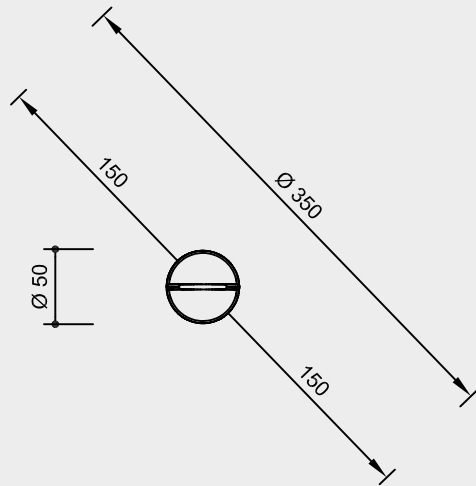
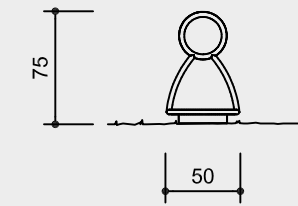
**Recommended for**

- Children under 3 years
- Kindergarten children
- Supervised play areas, such as kindergartens, schools, after-school programmes or similar
- Public play areas without supervision, such as playgrounds, parks or similar



**Order No. 6.26400**  
**Small Spinner**

Safety distance   
Device dimensions   
Functional distance 



Scale 1:50

Safety check according to DIN EN 1176

**Components**

- 1 Small Spinner
- 1 Foundation frame

**Installation information**

Surfacing requirements corresponding to a fall height of  $\leq 0.60$  m (please refer to price list for more detailed information)

Foundations  
1 item 60 x 60 x 20 cm  
Excavation depth 60 cm

**Attention:**  
**Exact measurements may vary, for all installation dimensions refer to current installation instructions.**  
Technical changes reserved.

**Technical information**

Equipment made of stainless steel, glass bead blasted

**Ground anchor**

All parts used for anchoring to the ground are made of hot-dip galvanised steel or stainless steel



**Roller bearings**

High-quality roller bearings made of chrome steel or stainless steel for rotating elements, easy to maintain and exchange, sealed



**For more detailed explanation of the quality characteristics see price list.**

Ergonomic handrail tubing  
Ø 33.7 mm

Surfacing made from checker plate

Foundation frame made of steel

**Dimensions**

(small deviations possible)

Height	0.75 m
Diameter	0.50 m
Weight	35 kg



**6.26400**